

educational lockers

elite range of products



These steel coloured lockers are manufactured to the highest specification. The range includes standard height 1800mm, reduced height 1370mm and modular storage solutions for those awkward areas.

Lockers are welded and riveted in construction. Semi concealed hinges are welded to the door and riveted to the frame, allowing easy replacement of damaged doors. The doors are mounted within a rebated frame to enhance compartment security. Selected doors are reinforced with profiled steel sections.

The carcass incorporates nesting holes on all sides and a return flange at the base for extra strength and to reduce floor damage. Lockers are manufactured using CR4 and bright galvanised steel (internal components only). Material thickness specification 0.9mm doors and frame, 0.7mm carcass and shelves. Painted components are epoxy polyester powder coated prior to assembly to ensure all surfaces are protected. Nested lockers are manufactured with common sides, offering savings. The materials used classifies this locker as a fire retardant product meeting the BS Class '0' rating.

Standard Door Colour Options



All lockers supplied with mid grey carcass

- Robust steel construction
- Lockers to suit all age groups
- Helps to cut lost property issues
- Welded frame design
- Sloping top option
- Reinforced doors
- Lock options
- Class '0' fire rated



elite GUARD

Anti-bacterial powder coating an effective solution to fight against bacterial contamination for the life of the coating. Independently tested and found to be 99.9% effective against MRSA and E-coli. Also shown to exhibit zero growth for fungi and moulds.

elite GUARD offers the healthcare, food and those users requiring stringent hygienic environments an effective secondary support to existing cleaning practices in the fight against bacterial contamination.



 UK manufactured products.

school lockers

Standard Door Colour Options



All lockers supplied with mid grey carcass



one door

- Special height 1370mm
- Cost saving on nested lockers
- Reinforced doors
- Fitted with a shelf and a double coat hook
- Lock options

PRODUCT CODE	H x W x D mm
1330301	1370x300x300
1330381	1370x300x380
1330451	1370x300x450

two door

- Special height 1370mm
- Reinforced doors
- Lock options
- Fitted with double coat hook per compartment

PRODUCT CODE	H x W x D mm
1330302	1370x300x300
1330382	1370x300x380
1330452	1370x300x450



three door

- Special height 1370mm
- Cost saving on nested lockers
- Reinforced doors
- Lock options
- No internal fittings

PRODUCT CODE	H x W x D mm
1330303	1370x300x300
1330383	1370x300x380
1330453	1370x300x450



modular storage



quarto locker

- Ideal modular storage solution
- Pre-drilled for stacking
- Lock options
- Reinforced doors
- Perforated door option

PRODUCT CODE	H x W x D mm
513045QU	512x300x450



Saving 7.5t of Co2 for every tonne reused

cube lockers

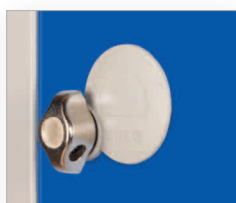
- Flexible storage solution for awkward areas
- Pre-drilled to form stacks or nests
- Lock options
- Wall mountable

PRODUCT CODE	H x W x D mm
303030C	300x300x300
383838C	380x380x380
454545C	450x450x450

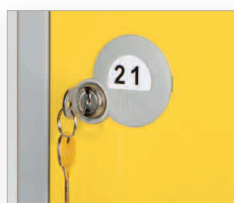
Lock Options



4 digit mechanical combination lock with master key override facility



Padlock fitting Type 2



Key cam lock mastered series supplied with 2 No. keys

Comprehensive brochure available on request

Authorised Distributor

